

Finding the lowest-energy crystal structure starting from randomly selected lattice vectors and atomic positions: first-principles evolutionary study of the Au-Pd, Cd-Pt, Al-Sc, Cu-Pd, Pd-Ti, and Ir-N binary systems

This content has been downloaded from IOPscience. Please scroll down to see the full text.

2008 J. Phys.: Condens. Matter 20 295212

(<http://iopscience.iop.org/0953-8984/20/29/295212>)

View [the table of contents for this issue](#), or go to the [journal homepage](#) for more

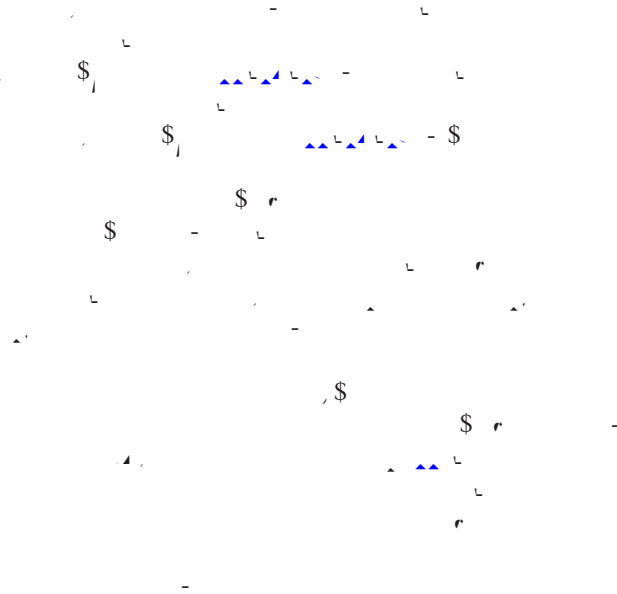
Download details:

IP Address: 128.138.65.115

This content was downloaded on 14/07/2015 at 17:55

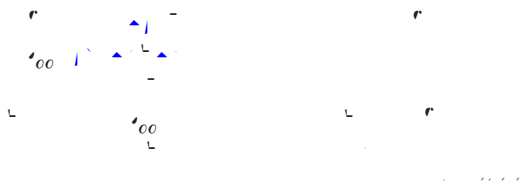
Please note that [terms and conditions apply](#).

Finding the lowest-energy crystal structure starting from randomly selected lattice vectors and atomic positions: first-principles evolutionary study of the



3. Evolutionary procedure for predicting crystal structures

Evolutionary



1. The first part of the document discusses the importance of maintaining accurate records of all transactions. This includes not only sales and purchases but also the payment of taxes and other obligations. Proper record-keeping is essential for determining the correct amount of tax to be paid and for identifying any potential areas of non-compliance.

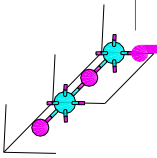
2. The second part of the document provides a detailed overview of the various tax forms and schedules that may be required. It explains the purpose of each form and provides instructions on how to complete them. This information is particularly useful for individuals who are new to tax filing or who are unsure of which forms they need to file.

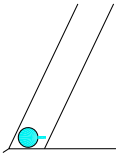
3. The third part of the document discusses the importance of staying up-to-date on changes in tax law. Tax laws are constantly in flux, and it is crucial for taxpayers to be aware of any new developments that may affect their tax liability. This section provides a summary of the most significant changes in tax law for the current year.

4. The fourth part of the document provides a comprehensive overview of the tax system, including the different types of taxes that are levied and the ways in which they are calculated. This information is essential for understanding the overall impact of taxes on an individual's income and for identifying any potential areas of tax avoidance or evasion.

5. The fifth part of the document discusses the importance of seeking professional advice from a tax advisor or accountant. These professionals can provide valuable guidance on how to minimize tax liability and ensure that all tax obligations are properly met. They can also help to identify any potential areas of non-compliance and provide advice on how to address them.

π





N_{at}

a) $(\gamma, \beta) = (1, 1)$ $(\beta, \gamma) = (1, 1)$

