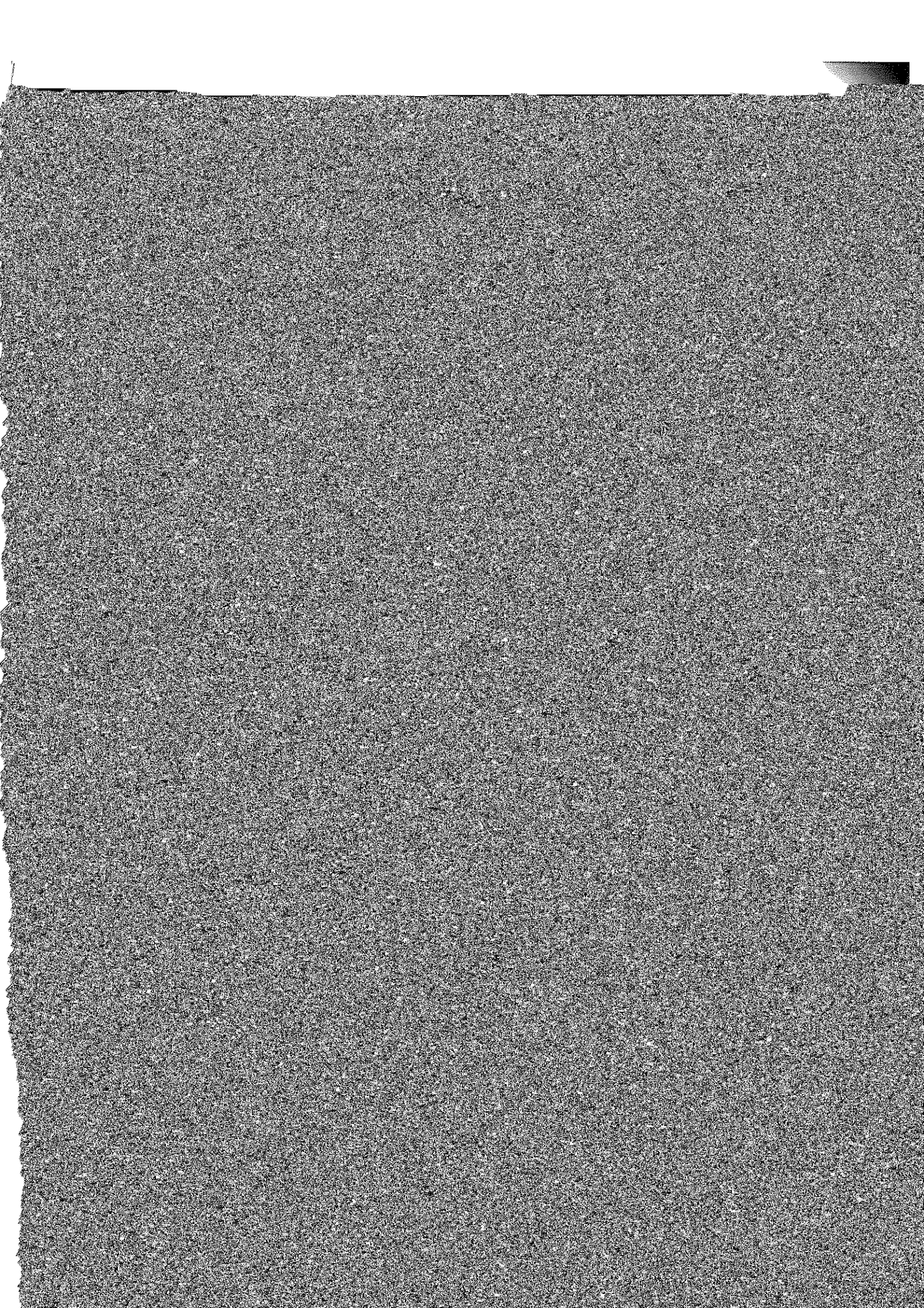
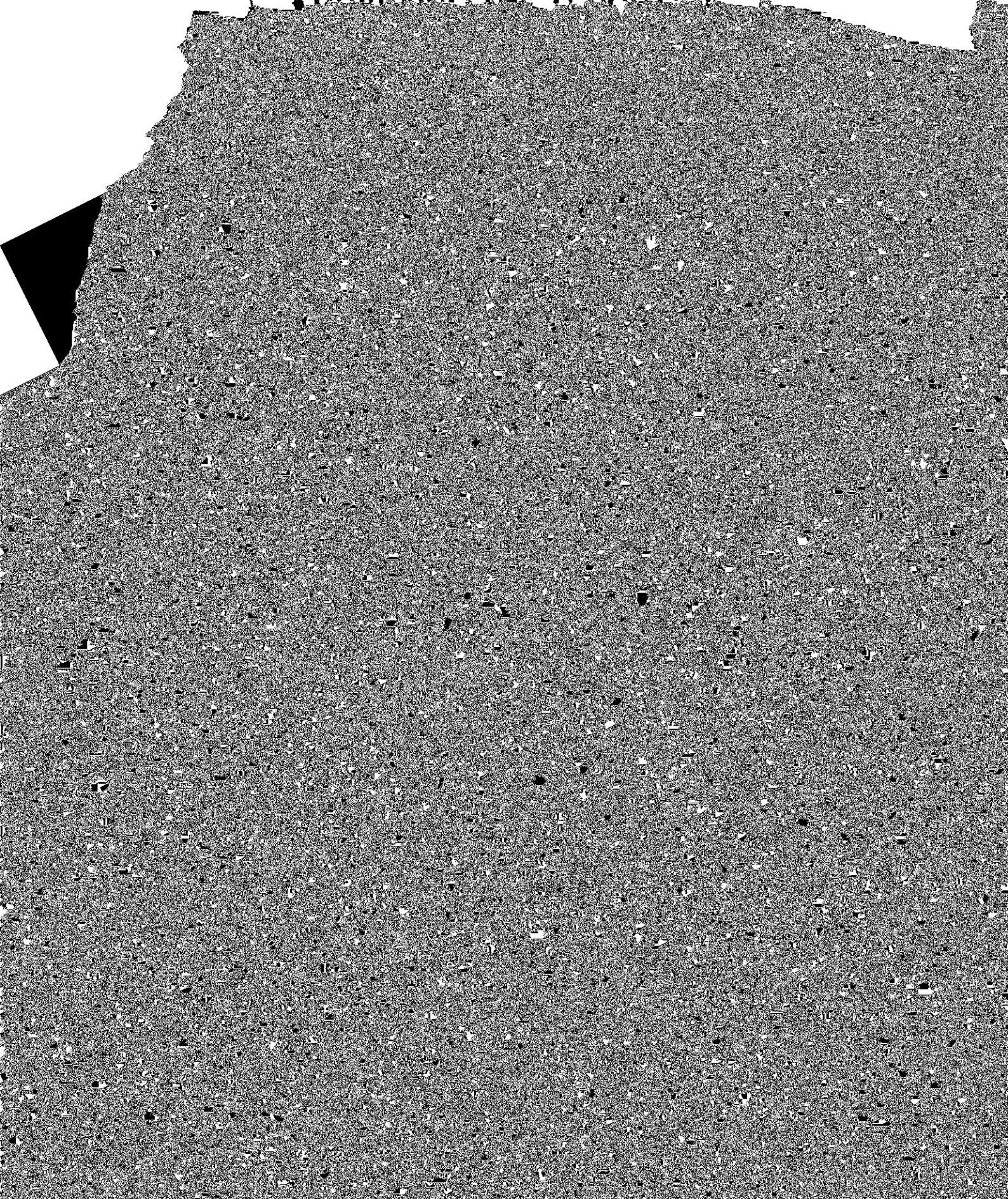
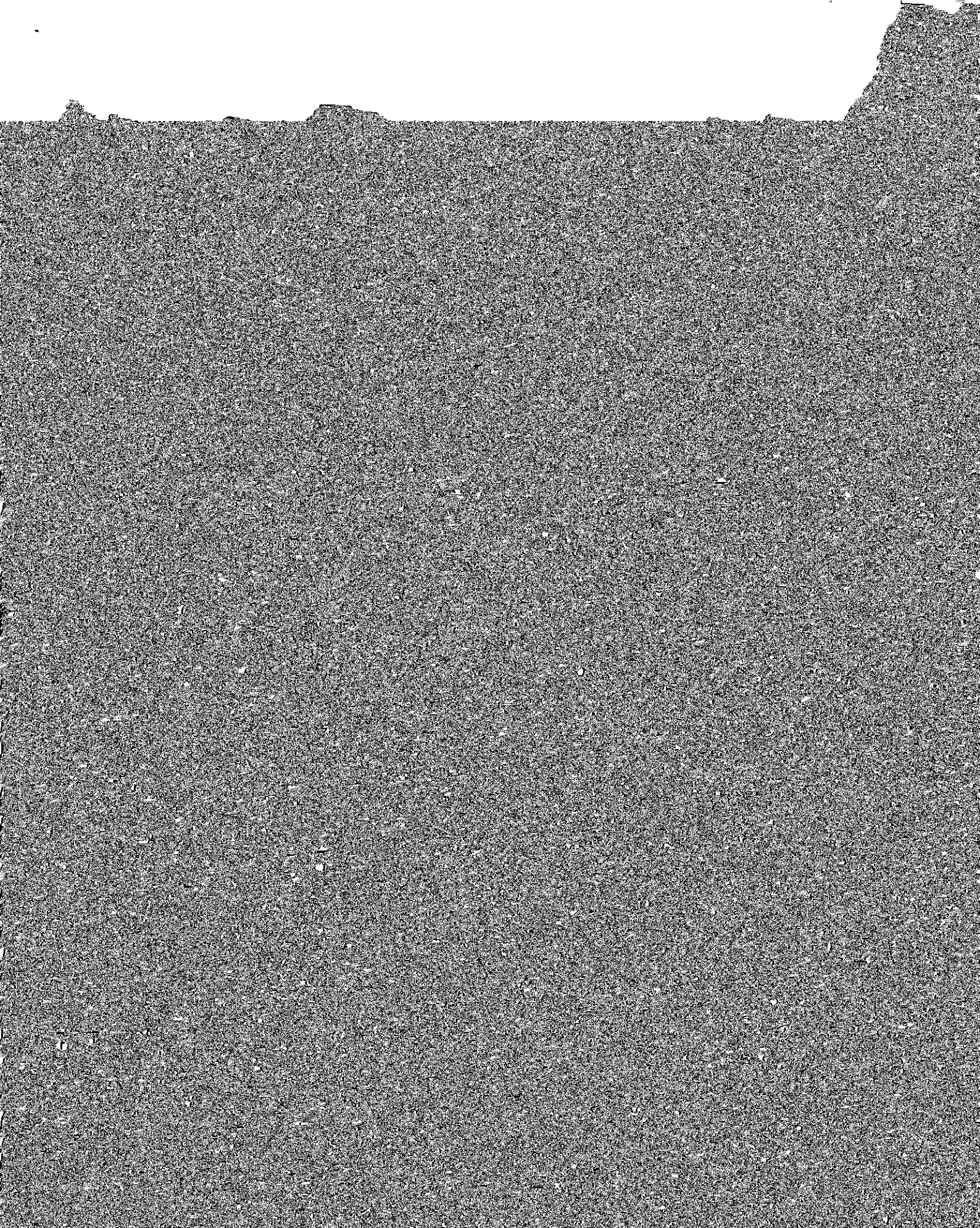


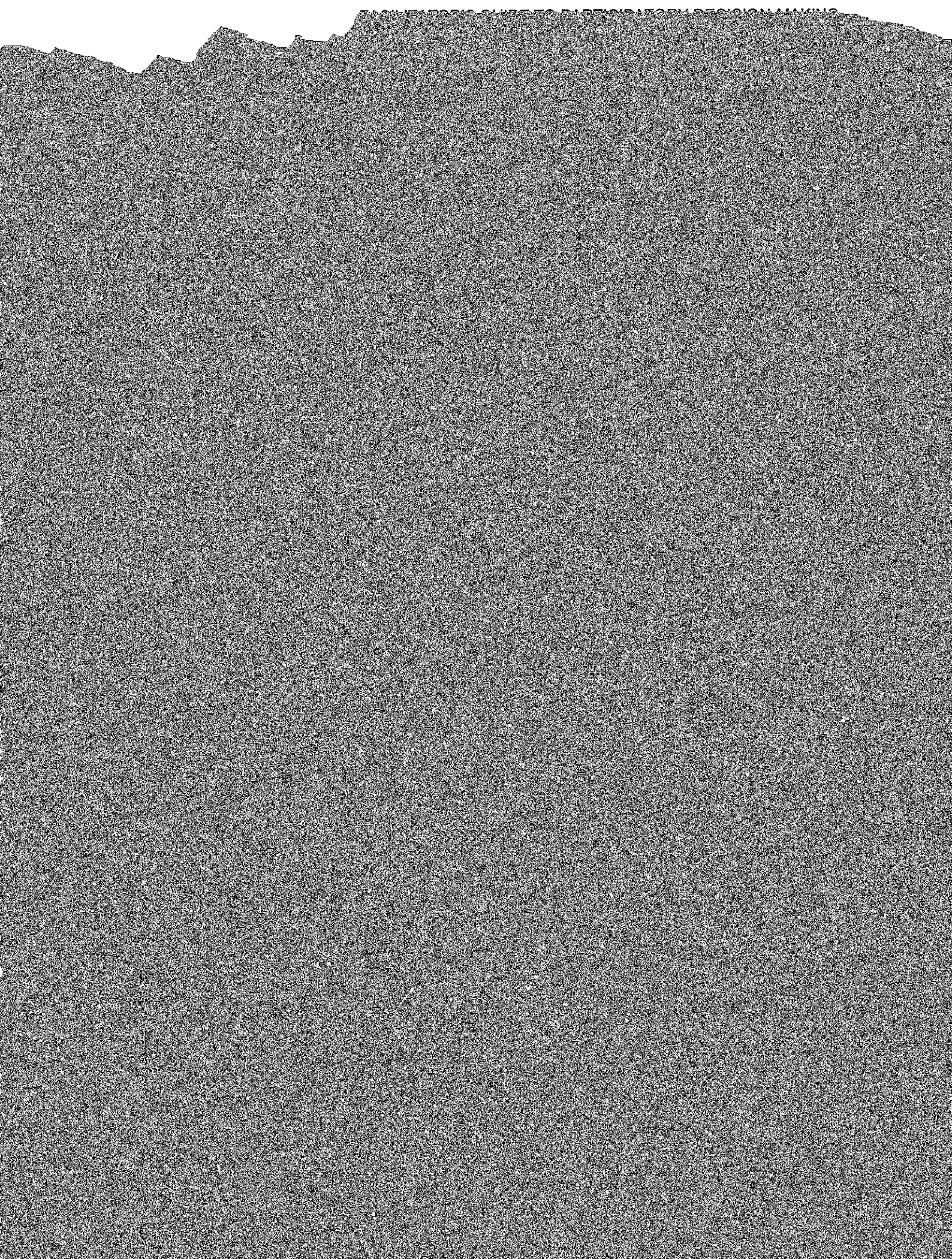
10

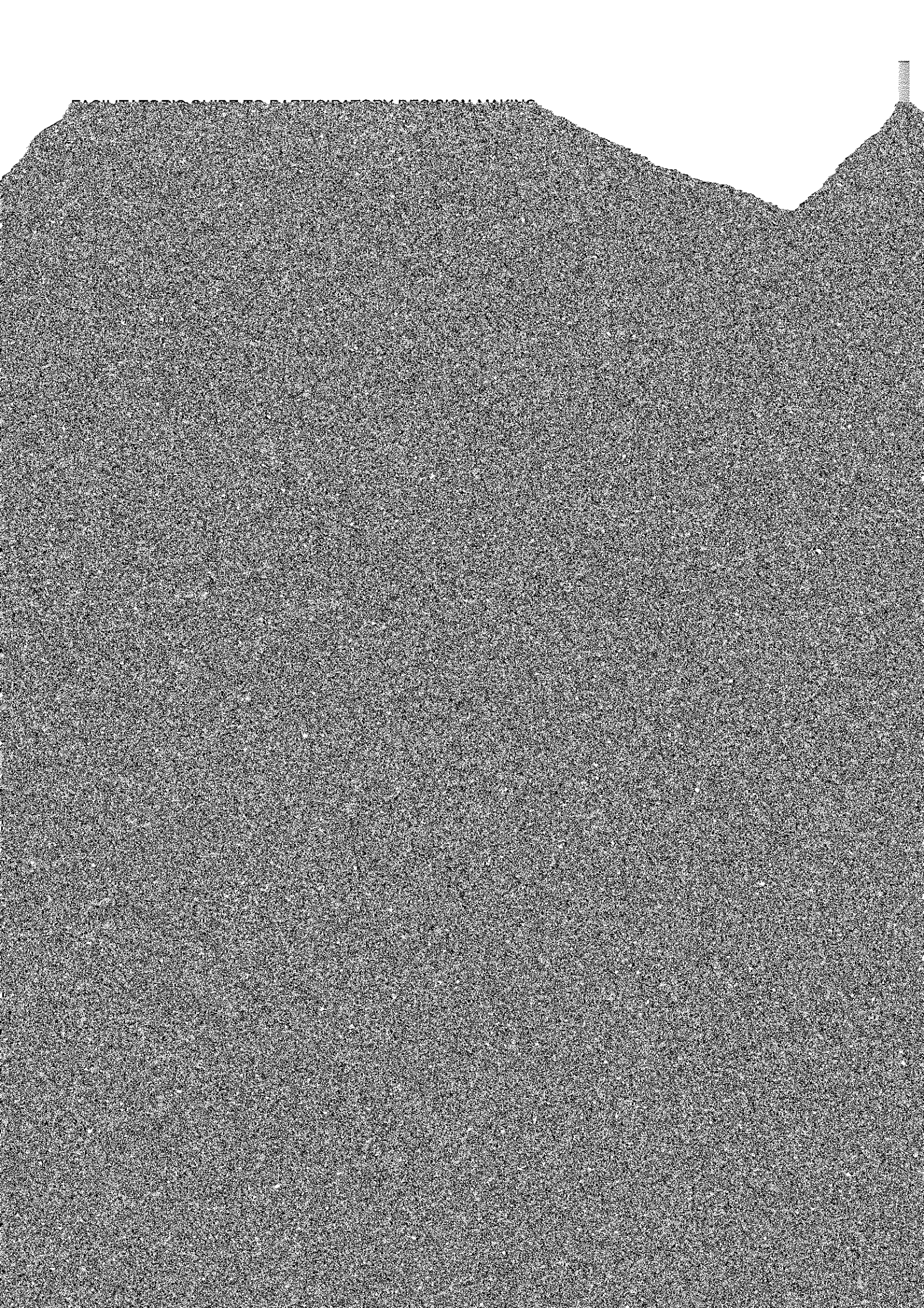


SURVEYING THE TERRITORY

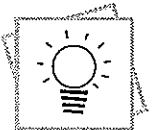




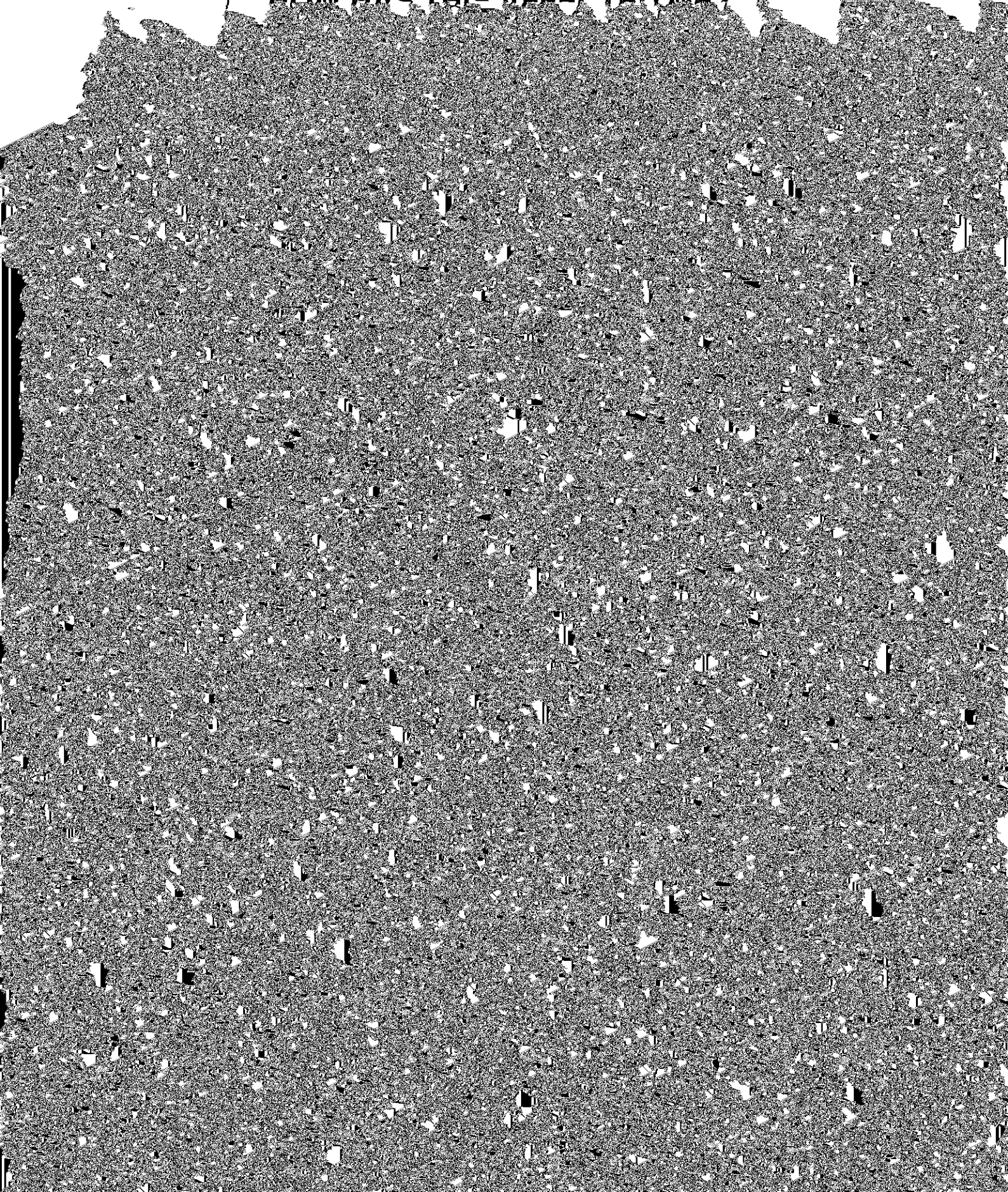


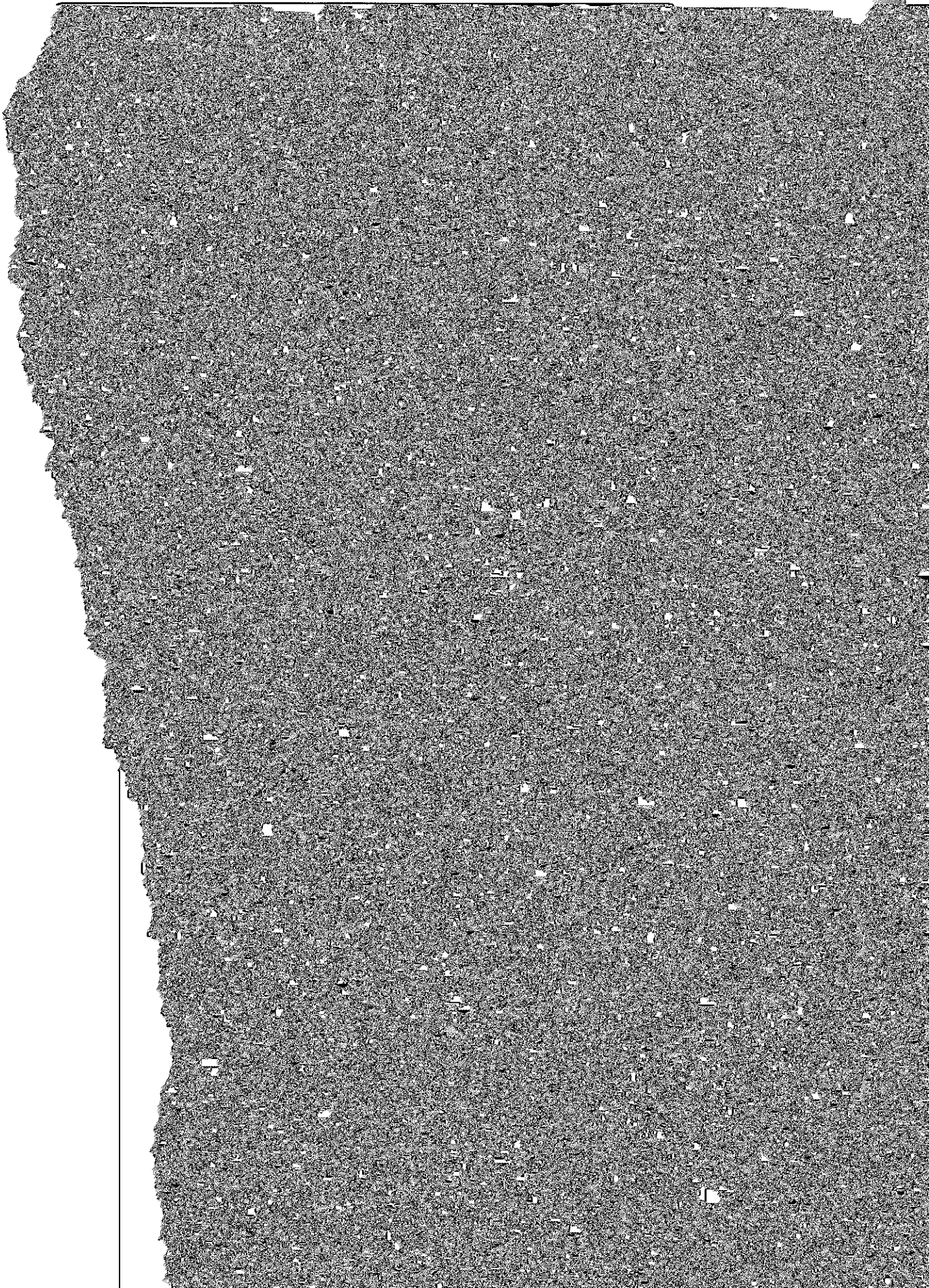


RAISING DIFFICULT ISSUES



HOW HAS THIS AFFECTED ME?

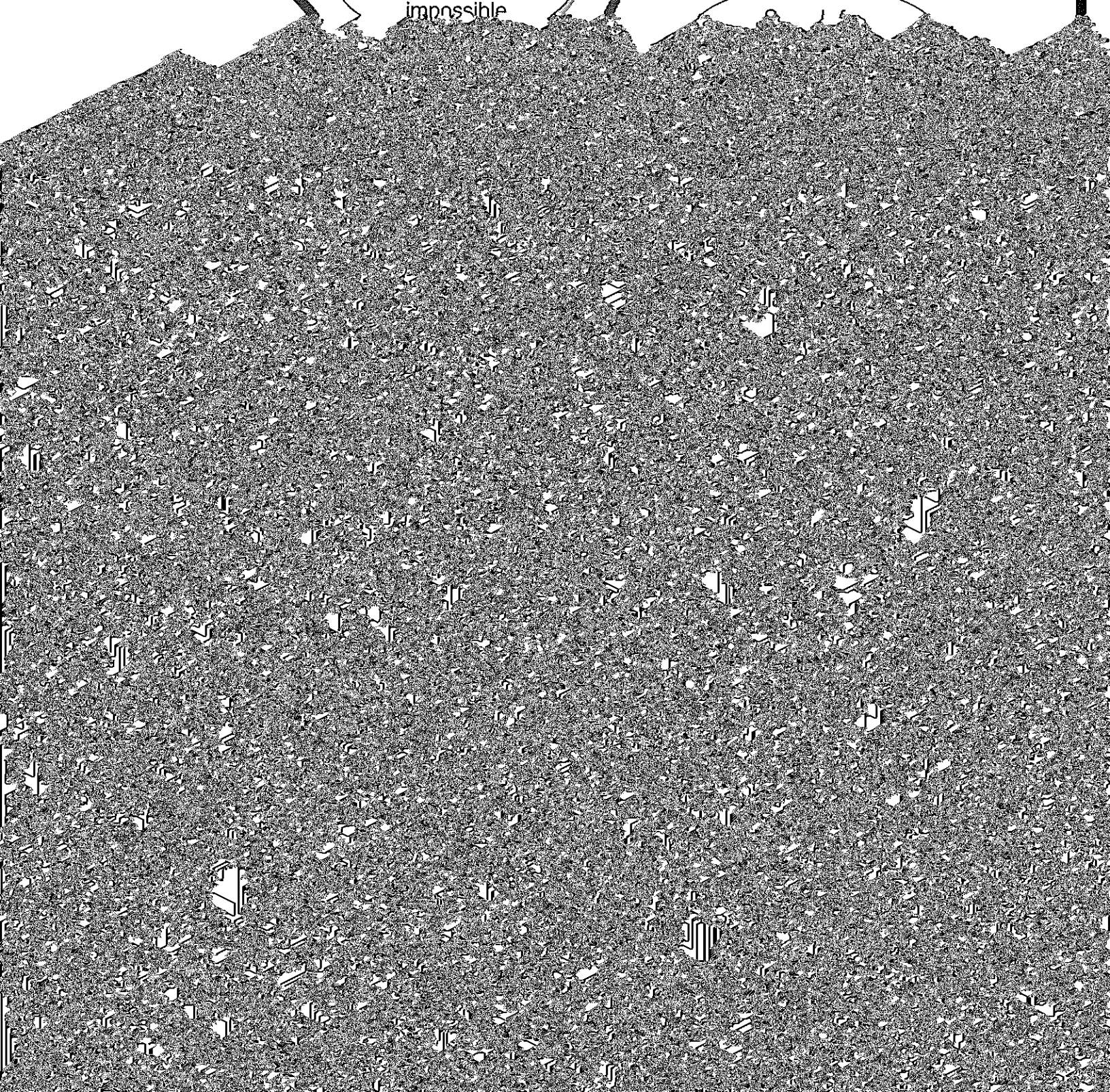




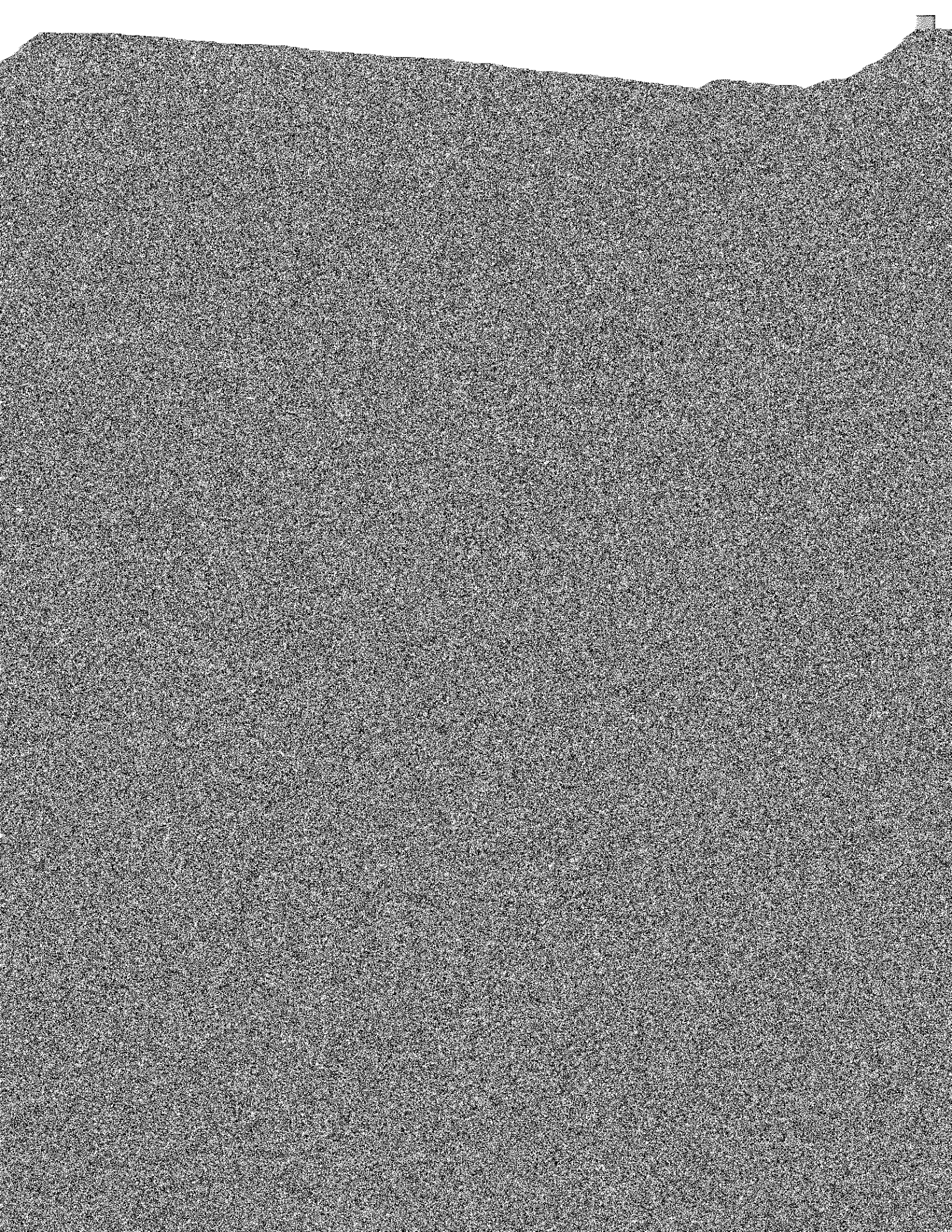
Do joint ventures
with new partners.

Question anything
that seems
impossible

Divide the problem
into independent
parts and solve
each separately.



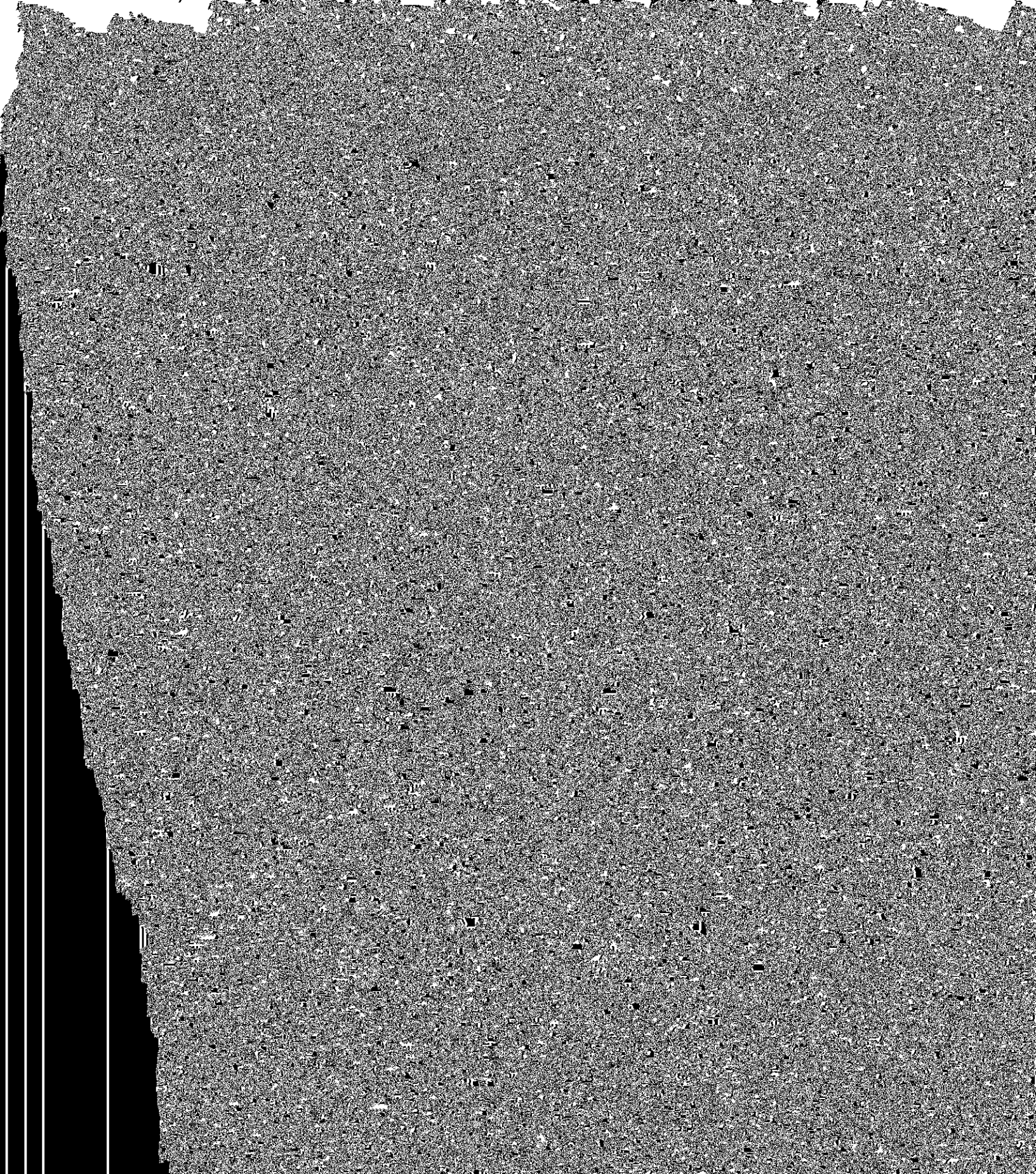


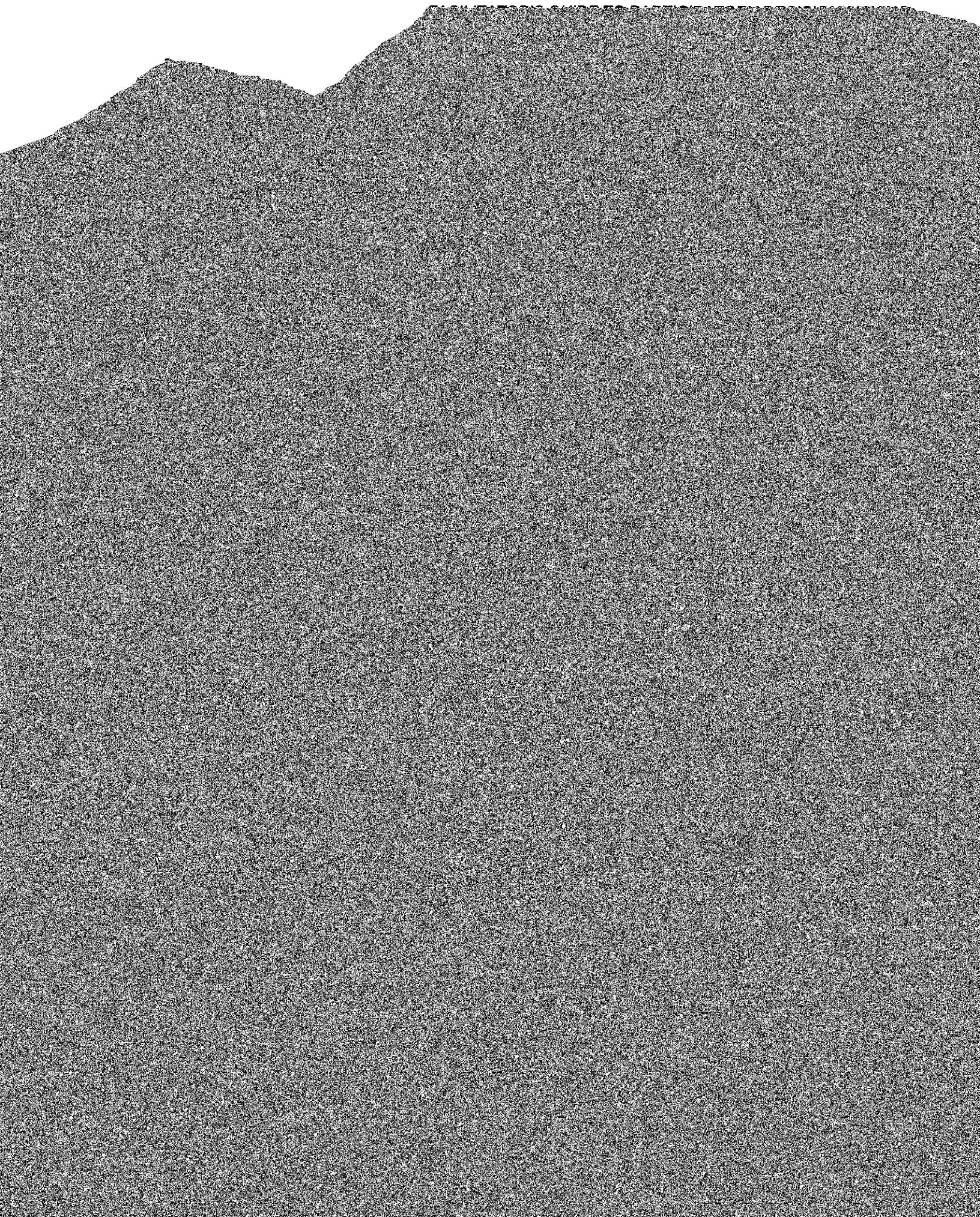


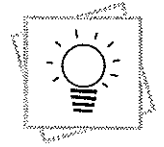
EXPLORING INCLUSIVE PRINCIPLES



CASE STUDY: LOCATING RESOURCES



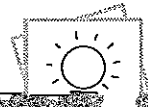




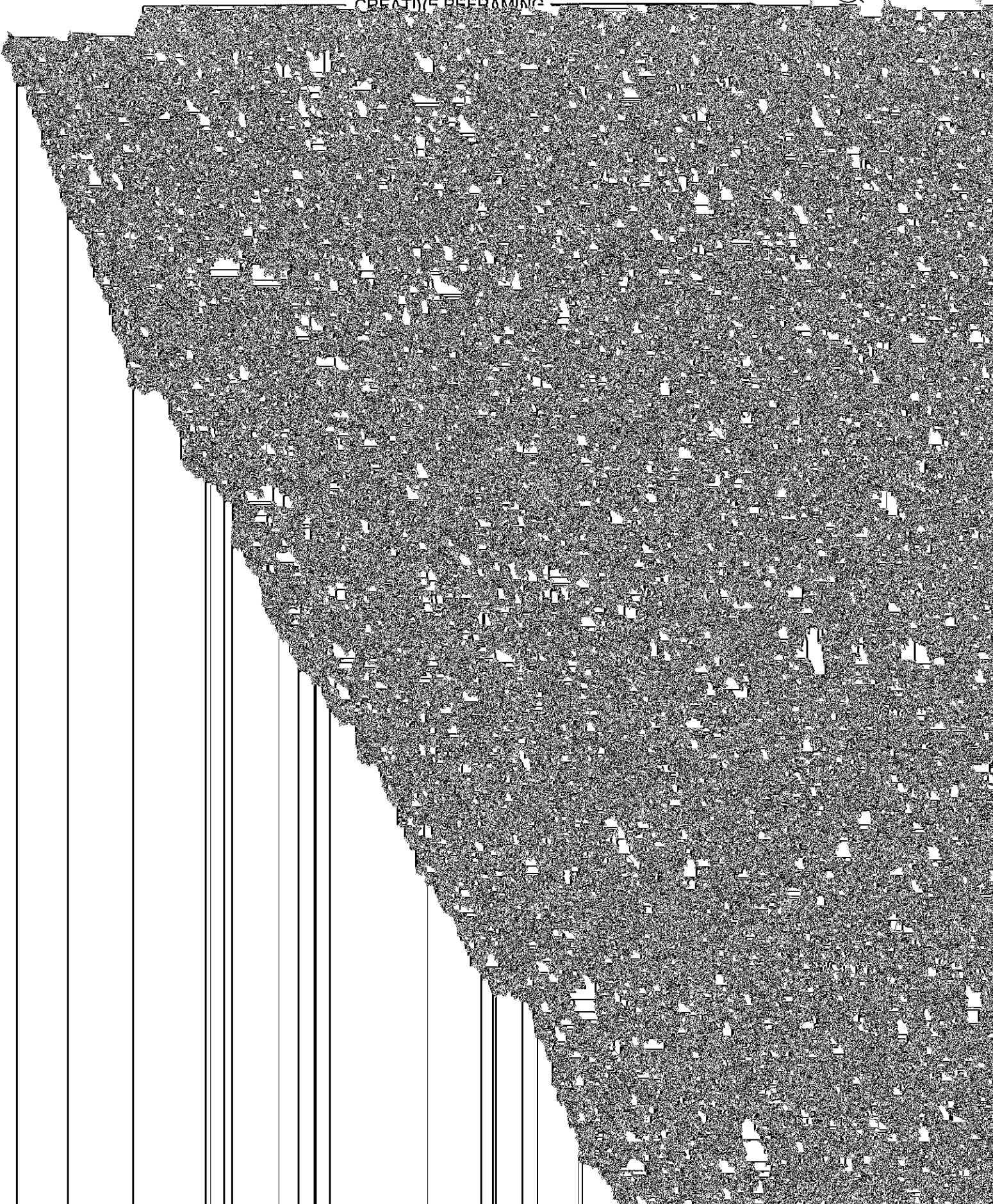
CREATIVE REFRAMING

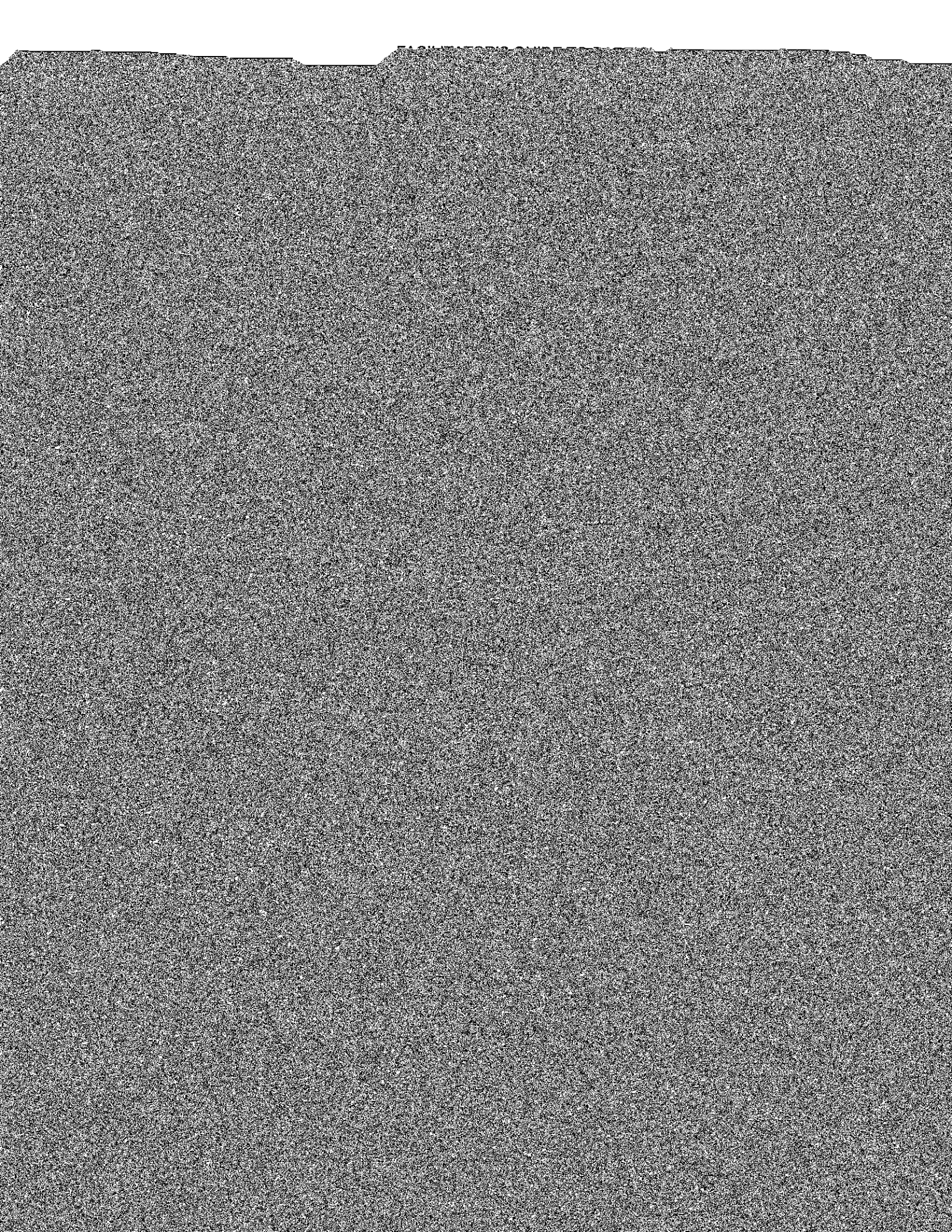
KEY WORDS

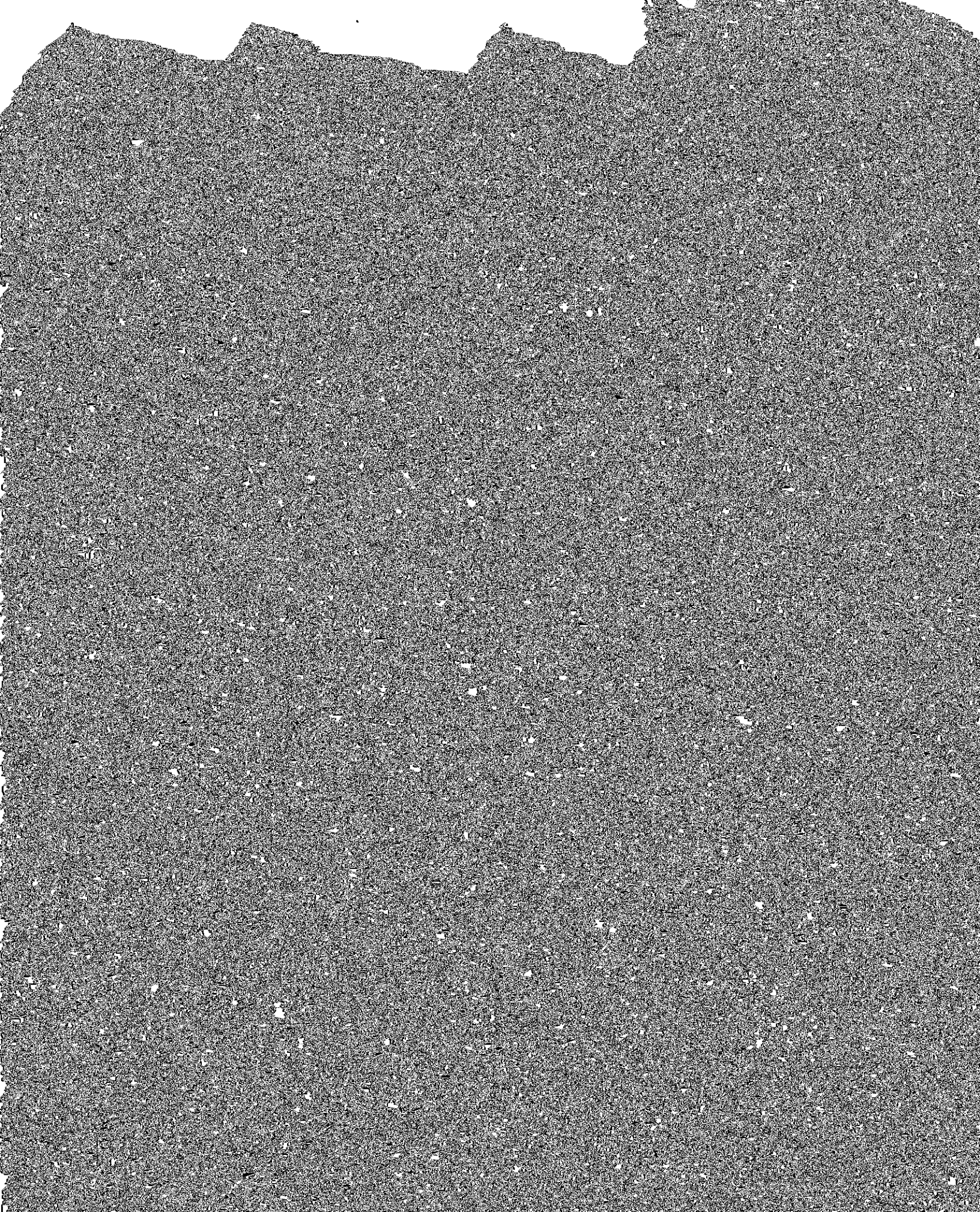
W/L/V



CREATIVE REFRAMING



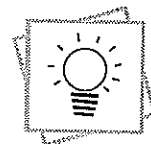




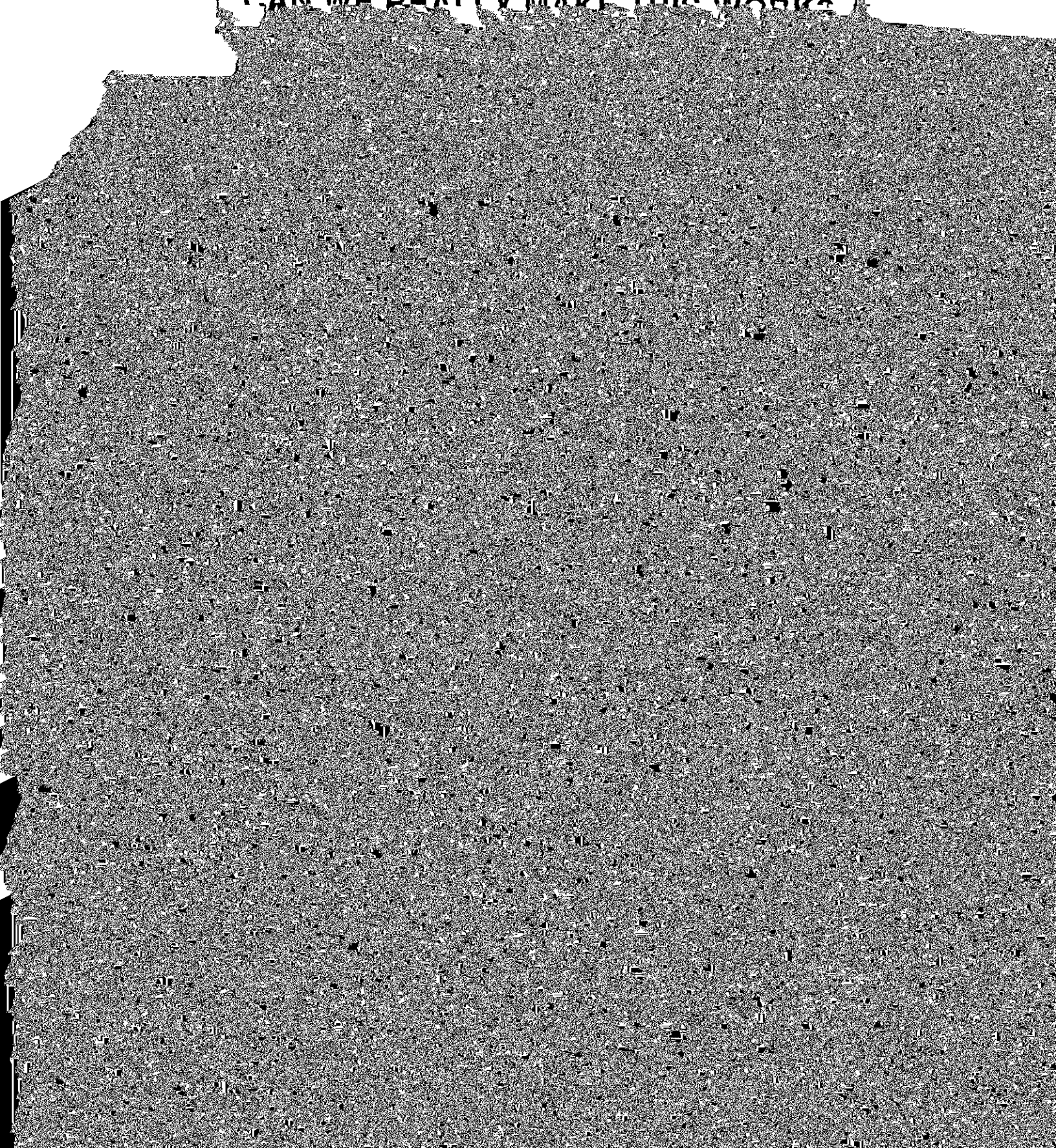
STRENGTHENING GOOD IDEAS



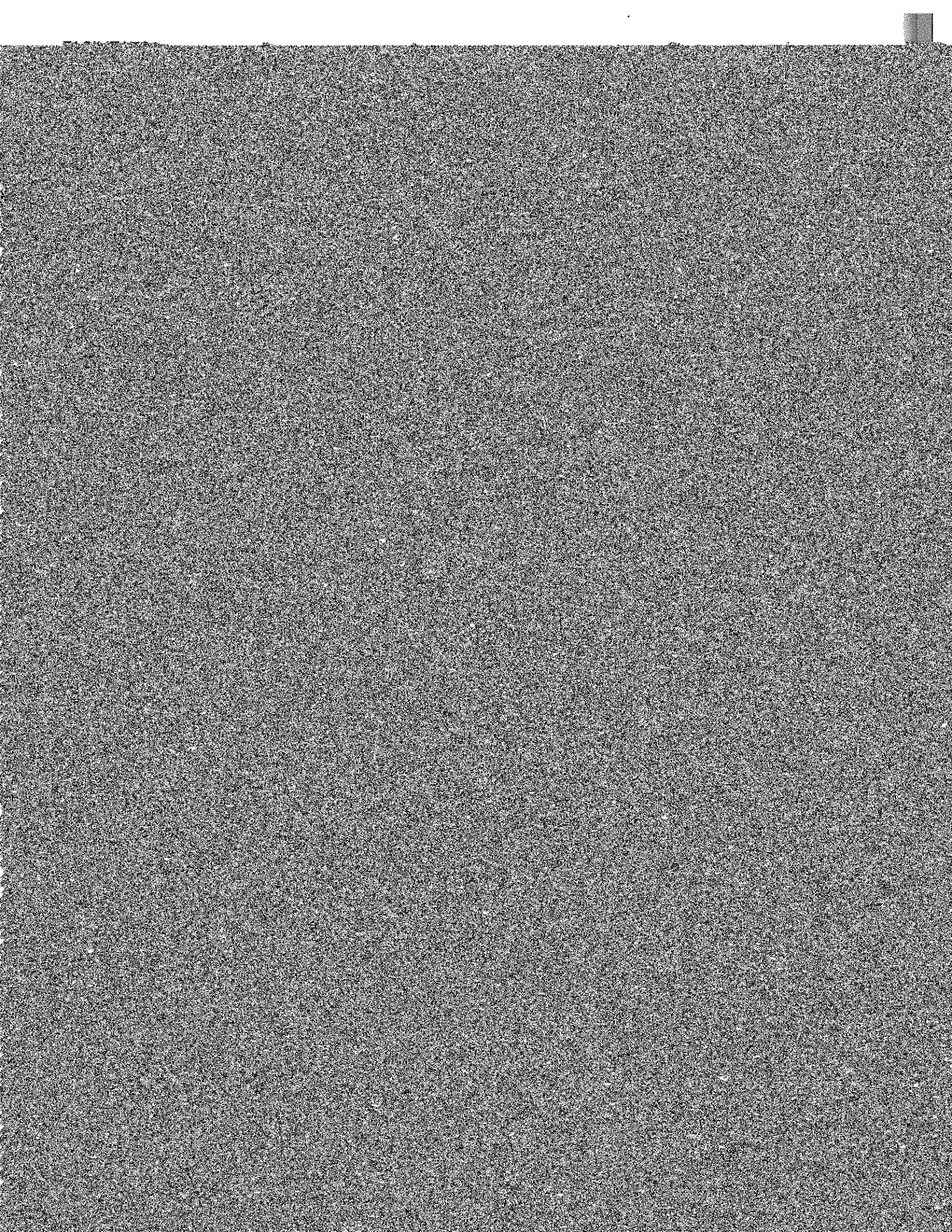
STRENGTHENING GOOD IDEAS

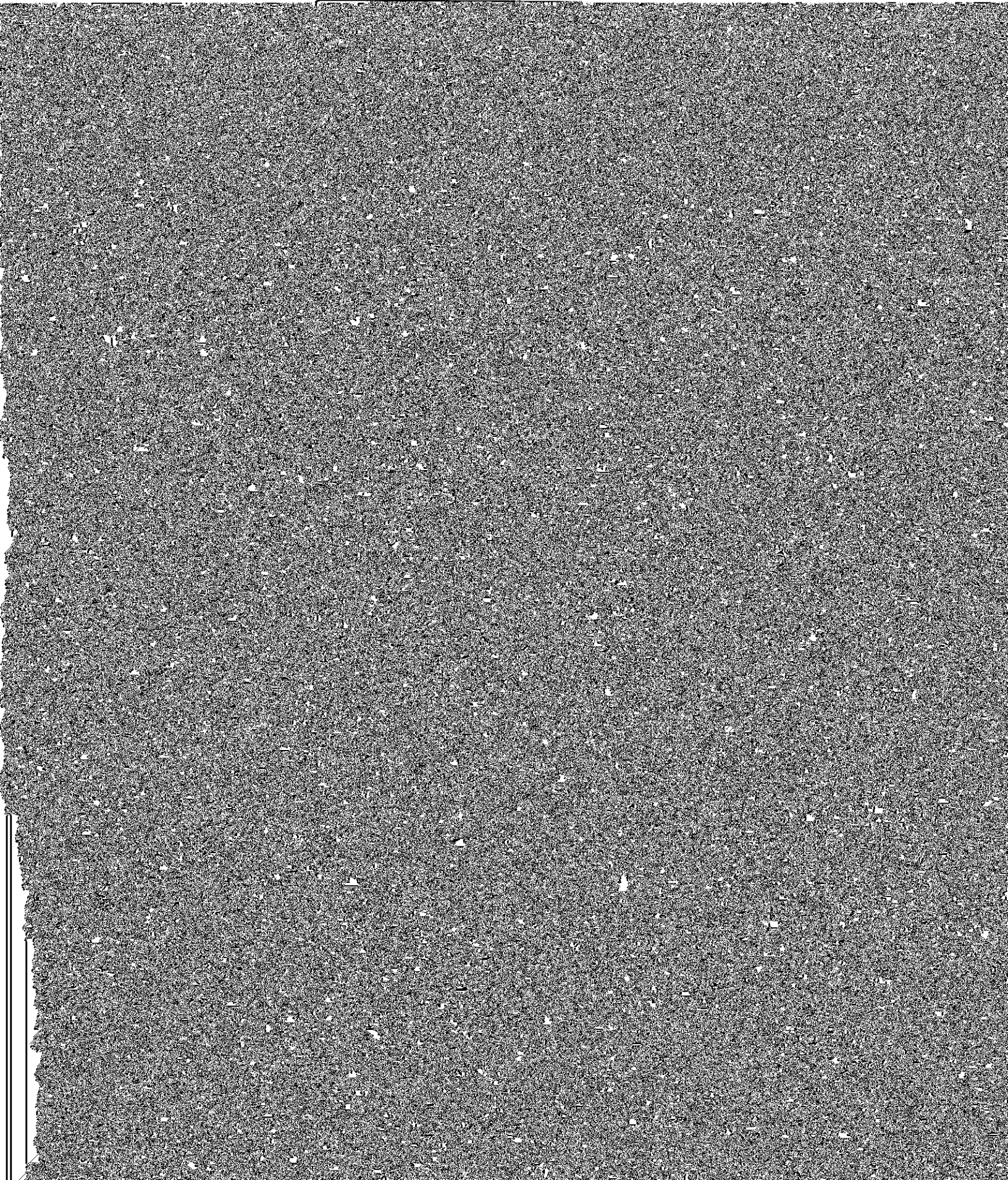


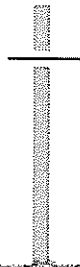
RESOURCE ANALYSIS: CAN WE REALLY MAKE THIS WORK?



16





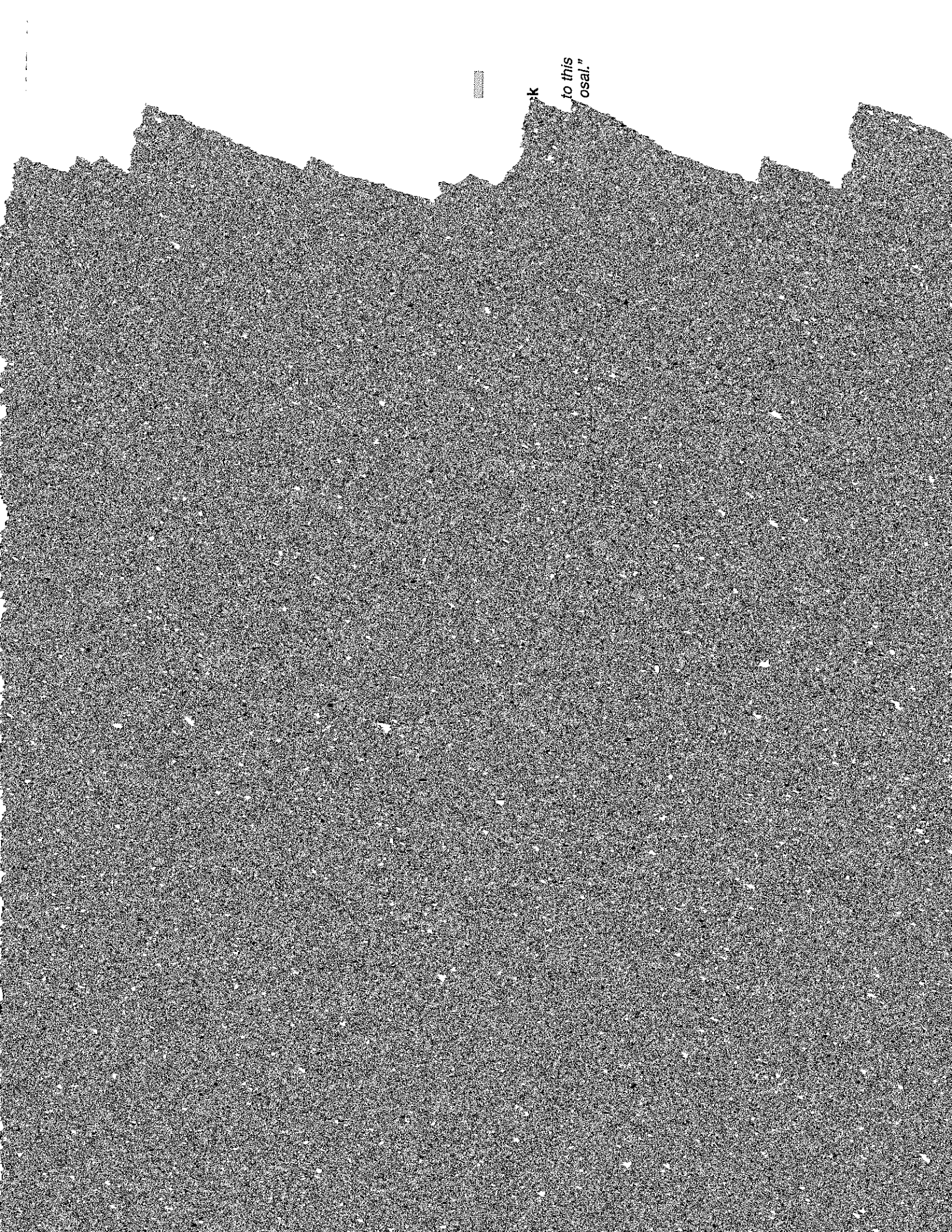


Block

"I veto this proposal."

ment,
uest to
ved of
bility for
ntation

ant to
ne else,
want to
d in
ting it."



to this
osal."



Block

"I veto this proposal."

to
of
for
n

se,
to
"

to this
"psal."

HOW TO USE

